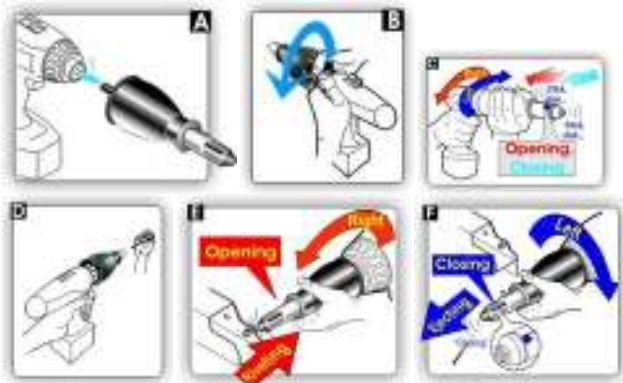


RiveDrill RT120HP Instructions

1. Choose correct nosepiece (1/8", 5/32", 3/16", 1/4") for blind rivet size and thread on to end of frame head.
2. Insert hex shaft in drill chuck (A) and tighten. (B)
3. If hole in silver frame is open, reverse tool direction until hole is covered by internal jaw and clicking sound is heard. (C)
4. Insert rivet in nosepiece (D) and place rivet in application. (E) Set tool in forward motion.
5. Hold protective body in one hand and pull drill trigger with other to set the rivet.
6. After rivet is set, place drill in reverse direction and pull trigger until rivet mandrel is ejected and clicking sound is heard. (F) This allows the jaws to return to riveting position. Be certain spent mandrel is completely removed from tool after rivet is set. (E)
7. To rivet again, repeat steps 3-6



RiveDrill RT120HP Instructions

Removal of broken mandrel from nosepiece and jaws of RiveDrill RT120HP or jaw replacement

- 1) Remove #5 Snap Ring
- 2) Pull out #2 Rotor and #3 Jaw Case
- 3) With 2 wrenches attached to flats, separate #6 Jaw Case
- 4) Remove #4 Jaws and Jaw Pusher (not shown)
- 5) Discard broken mandrel
- 6) Lightly lubricate outside of #4 Jaws and return to #3 Jaw Case
- 7) Reassemble parts

