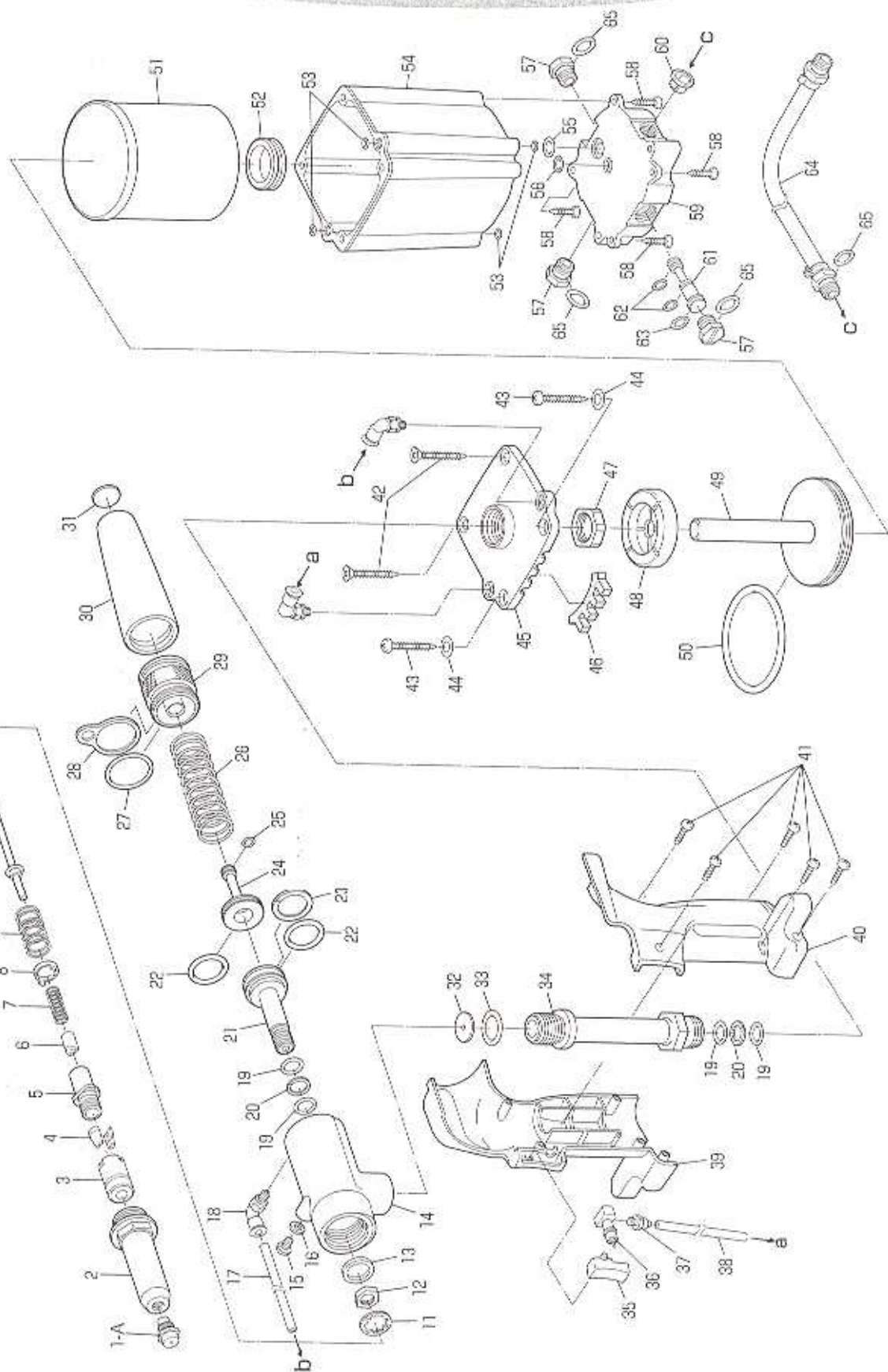
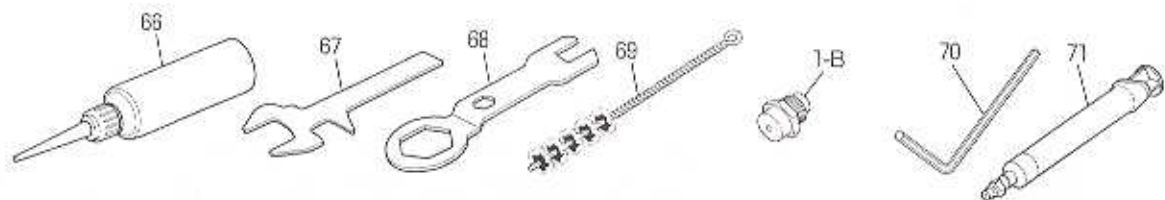


# AR2000H PARTS TABLE





Index No.	Part name	Code No.	Index No.	Part name	Code No.
1-A	Nosepiece 'L' 4.8 (3/16)	10216	37	Terrapin connector	29351
1-B	Nosepiece 'H' 6.4 (1/4)	10226	38	Polyurethane tube 120 mm	29729
2	Frame head 'H'	29709	39	Frame cover 'H-R'	29718
3	Jaw case head 'H'	10447	40	Frame cover 'H-L'	29717
4	Ultra jaws (pair) 'H'	10493	41	Pan head tapping screw 3×10	29340
5	Jaw case	10429	42	Flat head tapping screw 5×35	29367
6	Jaw pusher 'H'	29710	43	Pan head tapping screw 5×35	29608
7	Jaw pusher spring 'H'	29711	44	Flat washer No.5	29609
8	Jaw case collar	10448	45	Cylinder top (with muffler)	29756
9	Collar spring	10449	46	Muffler	29377
10	Guide pipe 'H' 6.4	29752	47	Frame lock nut 'H'	29757
11	Lock washer	10148	48	Rubber cushion 'H'	29736
12	Jaw case lock nut 'H'	29712	49	Air piston unit 'H'	29758
13	Stop ring	23634	50	O-ring P-70	10212
14	Frame unit 'H'	29749	51	Cylinder cup 'H'	29741
15	Bleed plug (Hexagon socket head cap screw)	29337	52	Grommet	29361
16	Pack seal 6 mm	10355	53	O-ring S-5	10276
17	Polyurethane tube 235 mm	29730	54	Cylinder cover 'H'	29740
18	Connector	29354	55	O-ring P-10	10274
19	O-ring P-12	10128	56	O-ring P-7	10149
20	B-ring P-12	10129	57	Change plug	29375
21	Oil piston 'H'	29721	58	Pan head tapping screw 4×20	29610
22	O-ring P-24	10207	59	Cylinder bottom 'H'	29739
23	B-ring P-24	10208	60	Dust-proof cap	29811
24	Back piston 'H'	29767	61	Spool	29812
25	O-ring P-8	10336	62	O-ring P-5 (4D)	29613
26	Return spring 'H'	29726	63	O-ring P-8 (4D)	29614
27	O-ring S-32	29727	64	Air hose unit	29448
28	Hanger clip	10192	65	O-ring P-9	10219
29	Frame cap 'H'	29728	66	"LOBSTER" brand hydraulic oil	10012
30	Safety cap (with bottom plate)	29841	67	Spanner 'B'	29642
31	Bottom plate	27875	68	Spanner 'A'	10217
32	Shock plate	29378	69	Cleaning brush	10143
33	O-ring P-20 (1B)	29731	70	Hex key wrench 5 mm	25777
34	Oil sleeve unit 'H'	29755	71	Priming pump (syringe unit)	29624
35	Switch	29348			
36	Valve sleeve	29350			

\* Part no. 14 includes part nos. 13, 15, 16, 19 and 20.

Part no. 34 includes part nos. 19, 20 and 33.

Part no. 49 includes part nos. 48 and 50.

Part no. 64 includes part no. 65.

## ORDERING PARTS

Indicate the tool model, part name, code no. and quantity as shown below when ordering.

Model	Part Name	Code No.	Qty.
AR2000H	Ultra jaws (pair) 'H'	10493	1
AR2000H	Frame head 'H'	29709	1

\* When parts are modified for improvement, the older parts are kept in stock for a period of five years.